

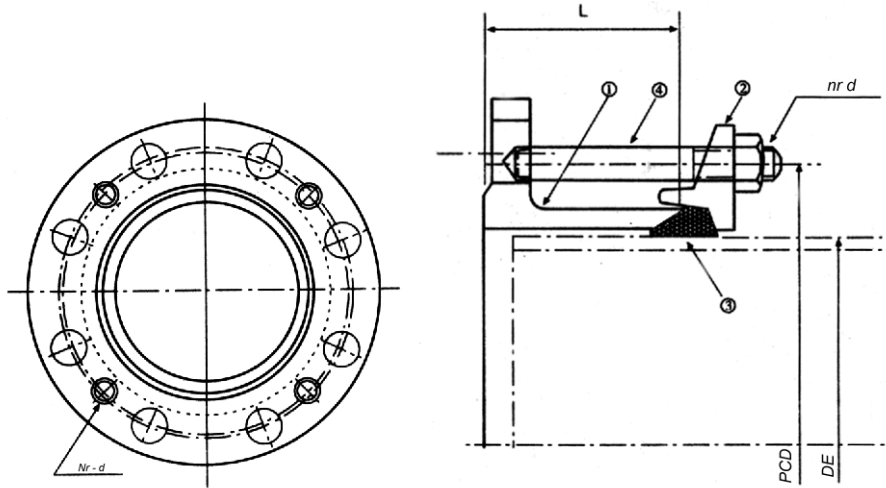


## DISMANTLING JOINT T-RK (FA)

Nominal pressure:  
**PN 10/16**

Flange connection:  
**ISO 2531**

Hygenic. cert. PZH:  
**HK/W/0256/01/2007**



Ductile Iron Flange Adapter T-RK (FA).  
Designed for installation of Ductile Iron piping.

Anticorrosion protection (OPTIONS):

- internally and externally coated with bitumen, admitted to contact with drinking water
- epoxy powder coating EKB (electrostatic plastic coating, according to RAL-G2662)

| No. | Description            | Material     |
|-----|------------------------|--------------|
| 1   | Flange adaptor         | Ductile Iron |
| 2   | Gland                  | Ductile Iron |
| 3   | Gasket                 | Rubber EPDM  |
| 4   | Bolts (DIN 975) & Nuts | Zinc plated  |

| Nom. Diam.<br><b>DN</b><br>[mm] | Pipe outs. Diam.<br><b>DE</b><br>[mm] | <b>L</b><br>[mm] | <b>PCD</b><br>[mm] | Stud Bolt |               | Mass                |                     |
|---------------------------------|---------------------------------------|------------------|--------------------|-----------|---------------|---------------------|---------------------|
|                                 |                                       |                  |                    | <b>M</b>  | <b>i Qty.</b> | <b>PN10</b><br>[kg] | <b>PN16</b><br>[kg] |
| 80                              | 98                                    | 70               | 166                | M16       | 4             | 3.6                 | 3.6                 |
| 100                             | 118                                   | 70               | 187                | M16       | 4             | 4.2                 | 4.2                 |
| 150                             | 170                                   | 75               | 240                | M16       | 4             | 6.4                 | 6.4                 |
| 200                             | 222                                   | 75               | 293                | M16       | 4             | 8.6                 | 8.3                 |
| 250                             | 274                                   | 90               | 346                | M16       | 6             | 12.4                | 12.1                |
| 300                             | 326                                   | 90               | 410                | M16       | 6             | 17.6                | 17.2                |
| 350                             | 378                                   | 100              | 469                | M20       | 8             | 21.0                | 23.5                |
| 400                             | 429                                   | 100              | 521                | M20       | 8             | 24.5                | 28.0                |
| 450                             | 480                                   | 100              | 573                | M20       | 10            | 27.0                | 34.0                |
| 500                             | 532                                   | 100              | 626                | M20       | 10            | 31.0                | 43.0                |
| 600                             | 635                                   | 100              | 730                | M20       | 10            | 40.0                | 61.5                |
| 700                             | 738                                   | 100              | 837                | M20       | 12            | 51.0                | 61.5                |
| 800                             | 842                                   | 100              | 943                | M20       | 12            | 65.5                | 78.0                |
| 900                             | 945                                   | 100              | 1047               | M20       | 14            | 75.0                | 89.5                |
| 1000                            | 1048                                  | 105              | 1159               | M20       | 14            | 100                 | 128                 |
| 1200                            | 1255                                  | 115              | 1368               | M20       | 16            | 144                 | 188                 |
| 1400                            | 1462                                  | 145              | 1582               | M24       | 18            | 194                 | 235                 |
| 1600                            | 1668                                  | 165              | 1790               | M24       | 20            | 271                 | 237                 |
| 1800                            | 1875                                  | 185              | 1999               | M24       | 22            | 321                 | 400                 |
| 2000                            | 2082                                  | 205              | 2208               | M24       | 24            | 389                 | 483                 |

- SPECIAL PERFORMANCE ON REQUEST -